

CARING COMPASS

3 STATES OF MIND

EMOTION MIND
HOT
Use emotions to make decisions
Information on how we are really doing
Defensive
Reactive/Impulsive
Mood dependent
Disregard for consequences

KNOWING
Cool
Facts and logic come first
Decisions based on what makes sense
Awareness of pain
Wise MIND
More practical balanced choices
Use past experiences
Intellectualising a situation

REASONABLE MIND
Cool
Breathe it in...
Savor the Smell
Cool it off

Pizza Breathing

WISER helps us think more clearly in the present of situations...



Letter from Sarah & Clay

BOARD OF DIRECTORS

Clay Geittmann, *President*

Jordan Straker Chandler, *Secretary & Vice President*

Jim Auge, *Treasurer*

Martha Bancroft, *Director*

Anna-Lisette Davis, *Director*

Lucy Rankin, *Director*

Lisa Carlin, *Director*

Jim Hesser, *Director*

Faye Campbell, *Director*

Gary Silberberg, *Director*

Peta Roubin, *Director*

Ben Brettell, *Director*

Matt Carr, *Director*

David Murdoch, *Director*

Shauna Lockhart, *Director*

Dr. Drew Ramsey, *Director*

Jeff Rice, *Director*

Bruce Burkland, *Director*

Cathy French, *Director*

TYFS STAFF

LEADERSHIP TEAM

Sarah Cavallaro
Executive Director

Chris Moll
Director of Community Programming

Martina Hansen
Director of Finance and Operations

Peter Moffatt
Director of Red Top Meadows

Matia Wilson
Clinical Director

Austen Coviello
Education Director

Dear Friends & Partners,

At Teton Youth & Family Services, we often describe our work in simple terms: when a young person or family reaches a breaking point, we step in.

In 2025, that moment came more often, and with greater complexity, than ever before.

Across Wyoming, youth faced rising mental health challenges, family instability, and limited access to care. In response, TYFS provided **8,766 days of service** to **808 individuals**, offering everything from crisis shelter and residential treatment to therapy, prevention, and family support.

But numbers only tell part of the story.

Behind each one is a young person who needed safety. A parent navigating uncertainty. A staff member showing up – at 2 a.m., in a classroom, on a wilderness trail – ready to help.

This year also marked a turning point for our organization. We entered the final phase of our \$18 million Building Brighter Futures Campaign, **completing major facility upgrades** that will shape how we deliver care for decades to come. These spaces are not just new, they are designed to meet the real needs of *today's* youth: safety, dignity, structure, and connection.

None of this happens alone.

Public funding allows us to provide essential services. Philanthropy allows us to strengthen, stabilize, and innovate. Together, these partnerships ensure that when crisis happens, TYFS is ready.

Thank you for standing with us, and with the youth and families who need it most.

With gratitude,

Sarah Cavallaro,
Executive Director

Clay Geittmann,
Board President





Our mission is to help children and families find their way to fulfilling and constructive lives.

OUR VALUES

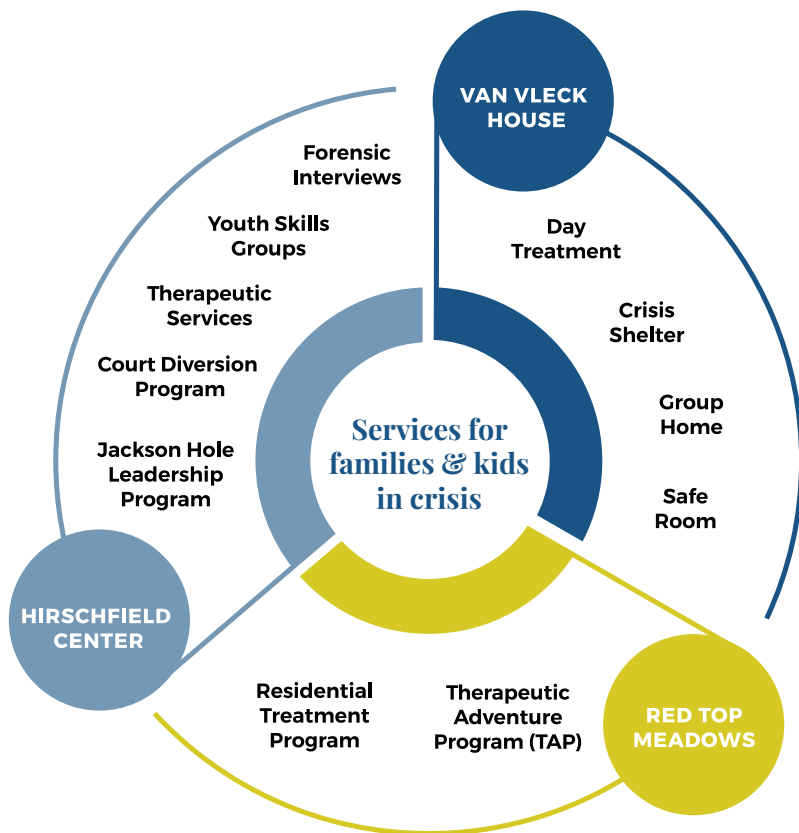
- Caring for the vulnerable
- Creating an environment that is physically and emotionally safe and fosters growth and healthy change
- Acceptance, kindness, dignity, respect, and non-judgment
- Values that create an environment for risk-taking, knowing that any attempt at change is a risk
- Providing the opportunities for youth and families to maximize potential
- Providing the opportunity for youth and families to experience supportive relationships, to learn about healthy relationships

Who does TYFS serve?

THREE CAMPUSES. ONE CONTINUUM OF CARE.

Teton Youth & Family Services has served children and families since 1977, growing from a single drop-in center into a comprehensive system of care.

Today, our work spans three campuses – each designed to meet youth at different points in their journey.



HIRSCHFIELD CENTER FOR CHILDREN

Prevention programming, therapy and counseling, family advocacy, juvenile court diversion

THE VAN VLECK HOUSE

Crisis shelter, group home, day treatment, therapeutic academic support

RED TOP MEADOWS

Residential treatment, accredited IEP-supported school, therapeutic adventure programming

Together, these programs form a **continuum of care** designed to stabilize, support, and strengthen youth and families with the goal of keeping families together whenever possible.

Our Impact

WHEN CRISIS HAPPENS, WE SHOW UP

In 2025, Teton Youth & Family Services responded to a growing and increasingly complex need across Wyoming.

Youth came to us when school wasn't working. When mental health challenges escalated. When families reached a point where they needed immediate support.

Our role in those moments is clear: provide safety first, then build a path forward.

For some, that begins with 24/7 care. At Van Vleck House and Red Top Meadows, youth step into structured, supportive environments designed to stabilize crisis and create space for change. Many arrive carrying layers of trauma, disrupted placements, and unmet needs.

With time, consistency, and therapeutic support, those patterns begin to shift. But crisis care is only part of the story.

TYFS provides therapy, diversion, and prevention services that help families navigate challenges before they escalate.

Together, this continuum ensures that whether a young person needs early support or intensive intervention, there is a place to turn.

OUTPATIENT SERVICES

HIRSCHFIELD CENTER & EMPOWERED MINDS

50

Youth served in Juvenile Diversion Program

752

Sessions with youth in Diversion Program

22

Forensic interviews conducted

3153

Contact touchpoints

162

Youth in JHLP

54

Youth served in day treatment

1226

Days of day treatment service

RESIDENTIAL SERVICES

VAN VLECK HOUSE & RED TOP MEADOWS

14

Average age of youth served

4,387

Total # of Safe Bed Nights

Average length of stay

42 DAYS
Crisis

52

Total # of youth served in residential care

140 DAYS
Group Home

48*

Total # of youth successfully discharged from residential care (92% success rate)

300 DAYS
Residential Treatment

OF THE YOUTH SERVED

79%

have a mental health diagnosis

29%

come from substance-abusing families

29%

have had one or more unsuccessful prior placements

21%

come from families in which one or more parents had been in jail for an extended period of time

14%

had planned or attempted suicide

71%

were prescribed psychotropic medications

29%

had suffered some form of abuse

**Success upon discharge- defined as youth returning to lower levels of care/ home*

OUTPATIENT THERAPY

33

New cases

25

Active and ongoing cases

468

Individuals served

156

Family cases

553

Therapy sessions

Supporting the *Whole* Child

EMPOWERED MINDS ACADEMIC SUPPORT PROGRAM

Austen Coviello, Education Director

Empowered Minds is an academic and therapeutic daytime support program for youth who are not currently in an in-person school setting. The program fills a critical gap for students and families navigating complex educational and mental-health needs, including youth enrolled in online school, those who are suspended or expelled, and out-of-county youth temporarily residing at the group home.

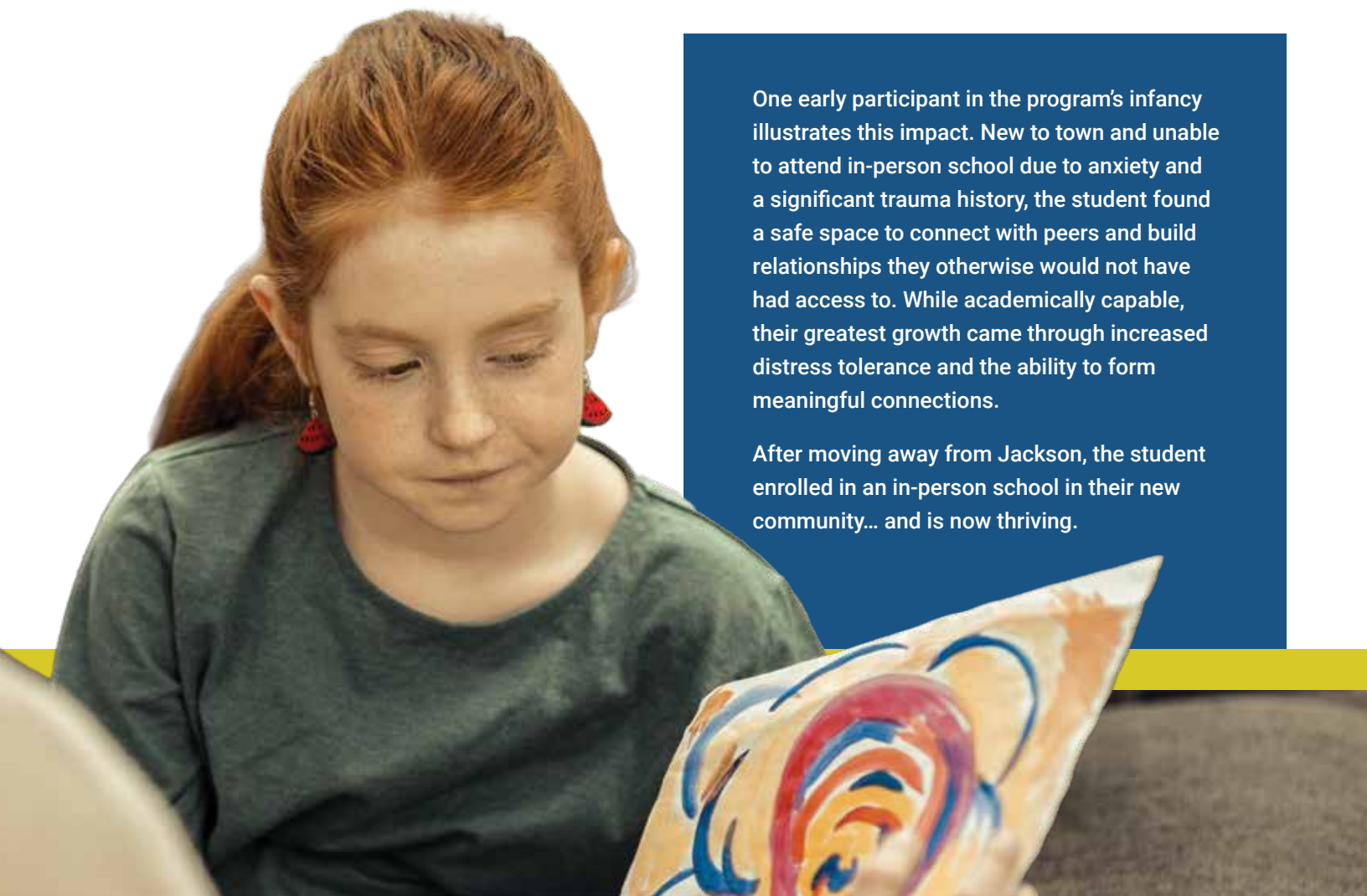
54 youth served
1,226 days of support provided

What sets Empowered Minds apart from traditional tutoring or school-based interventions is the integration of therapeutic support into each student's daily experience. In addition to helping students stay on track academically, every participant is connected with a therapist upon arrival. Highly trained staff provide consistent supervision, mentorship, and structure throughout the day.

By expanding the focus beyond academics to include social-emotional learning, therapy groups, and meaningful peer interaction in a small-group setting, Empowered Minds supports the whole child – academically, emotionally, and socially. Students often leave the program not only more stable academically, but with improved communication skills, stronger relationships, and a deeper understanding of themselves.

One early participant in the program's infancy illustrates this impact. New to town and unable to attend in-person school due to anxiety and a significant trauma history, the student found a safe space to connect with peers and build relationships they otherwise would not have had access to. While academically capable, their greatest growth came through increased distress tolerance and the ability to form meaningful connections.

After moving away from Jackson, the student enrolled in an in-person school in their new community... and is now thriving.





A New Era of *Care*

NEW & IMPROVED RED TOP MEADOWS

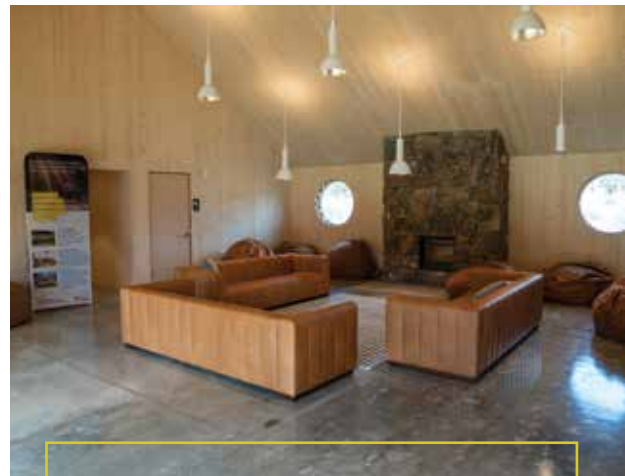
For the past two years, Red Top Meadows operated under significant constraints during construction, and served youth in temporary spaces while maintaining the integrity of the program. Even with limited capacity, the work continued.

Now, that chapter is closing. The new Red Top Meadows campus represents a fundamental shift in what's possible. Purpose-built for safety, structure, and healing, the space allows staff to better support youth through every stage of their experience, from therapy and academics to daily living.

“EVERYTHING WE DO IS BUILT ON RELATIONSHIPS AND SAFETY, AND THIS NEW CAMPUS ALLOWS US TO PROVIDE BOTH AT A LEVEL WE SIMPLY COULDN'T BEFORE.”

— PETER MOFFAT, DIRECTOR OF RED TOP MEADOWS

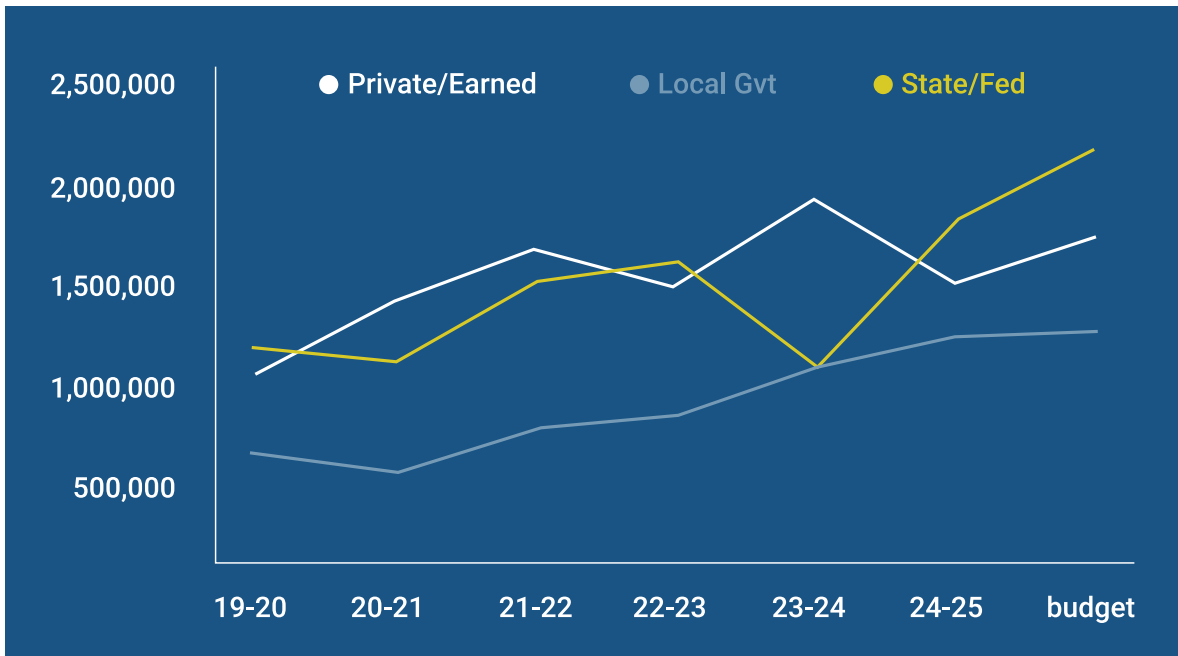
This transformation is not just about new buildings. It's about expanding capacity, improving care, and ensuring that more young people can access the support they need, when they need it.



Capacity: 7 → 15 youth

Avg stay: 300 days

Statewide residential program



Current *Funding* Landscape

WHAT IT TAKES TO DO THIS WORK

Over the past five years, TYFS has grown significantly, not by choice, but in response to need. Youth are arriving with more complex challenges. Programs require higher levels of staffing, training, and clinical oversight. The cost of providing safe, effective care has increased accordingly.

This is the reality of modern behavioral health.

Today, the majority of TYFS resources are directed toward direct services that ensure youth receive consistent, high-quality care when it matters most.

REVENUE GROWTH ROOTED IN MISSION

TYFS revenue has grown from approximately **\$3.0 million in FY19–20 to \$5.2 million in FY24–25 — nearly a 75% increase**. This growth reflects:

- Increased demand for services
- Higher staffing levels to ensure safety, continuity, and trauma-informed care

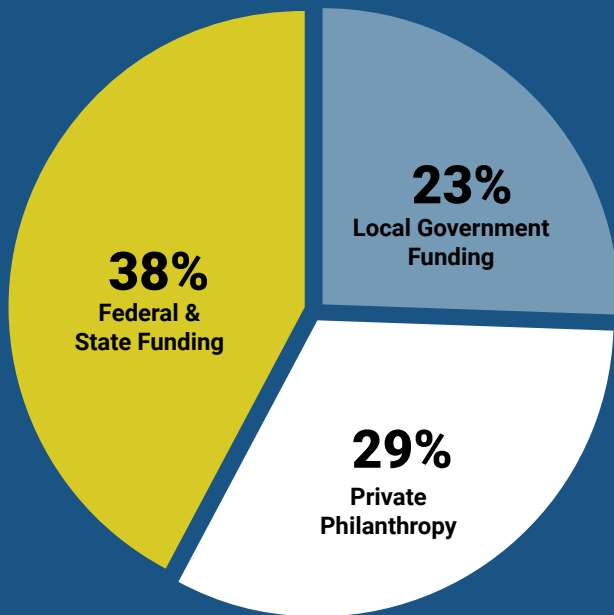
Importantly, this growth has been predictable and intentional, aligning with program needs, community expectations, and a heightened focus on quality and accountability. It is not expansion for expansion’s sake, it is growth in service of youth and families.

EXPENSES THAT REFLECT CARE QUALITY

Operating expenses have grown at a similar pace, rising from **\$2.9 million in FY19–20 to just over \$5.2 million in FY24–25**. The vast majority of this increase is tied directly to investments in people, safety, and infrastructure.

- Workforce Investment
- Insurance & Health Care Costs

TYFS in 2025 is not the same organization it was in 2019. We are serving youth with more complex needs, operating modernized facilities, and staffing programs with higher levels of training and clinical oversight.



SHIFTING THE TYFS REVENUE COMPOSITION

At the same time, funding sources have shifted, making community support more important than ever.

FEDERAL & STATE FUNDING

2015: 70% → 2025: 38%

LOCAL GOVERNMENT FUNDING

2015: 13% → 2025: 23%

This increased during COVID, but currently lacks inflation adjustments

PRIVATE PHILANTHROPY

2015: 17% → 2025: 29%

This is growing, but increasingly competitive and variable year-to-year.

For long-term sustainability, public reimbursement rates must better reflect the true cost of care, and philanthropy must continue to play a strategic, forward-looking role, not a rescue-based one.



TETON
YOUTH
& FAMILY
SERVICES
PRESENTS

YOUTH MENTAL HEALTH SUMMIT '25



285 attendees
6+ schools & partners

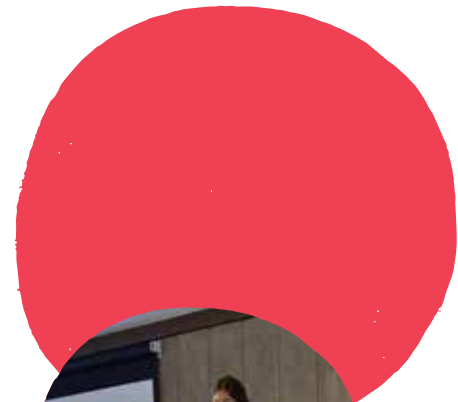
Emma Getsinger,
Development & Community Partnerships Manager

In 2025, Teton Youth & Family Services hosted the Youth Mental Health Summit, an action-oriented gathering grounded in the belief that youth mental health is a shared responsibility. More than 285 attendees from six schools, healthcare organizations, nonprofits, and community groups came together to learn, connect, and collaboratively address pressing mental health challenges facing young people today.

The Summit blended expert-led education, youth-centered conversations, and storytelling to explore topics including anxiety, depression, social isolation, technology use, and the unique barriers to care in rural communities. National partners helped ensure the event was grounded in research and best practices, including Prosper, Inc., the American Academy of Pediatrics' Dr. Megan Moreno, and the Boston Children's Hospital Digital Wellness Lab, whose work translated digital wellness science into practical tools for families and educators.

A highlight of the Summit was keynote speaker Drew Petersen, professional skier and mental health advocate, who shared his film *Feel It All*. Through his personal story, Drew spoke candidly about mental health struggles and the pressures of high-performance, adrenaline-driven mountain culture, resonating deeply with both youth and adults and helping reduce stigma through honesty and vulnerability.

The Summit's success relied on strong local partnerships with mental health professionals, schools, nonprofits, healthcare providers, and community leaders. These collaborations ensured the event was both informative and responsive to local needs, laying the groundwork for continued education, collaboration, and prevention-focused programming through TYFS. Its impact continues beyond the event, informing ongoing initiatives such as Unplug & Uplift, community education, and youth-centered mental health support across Wyoming.



“CARING FOR YOUTH MENTAL HEALTH ISN'T A TASK WE HAND OFF; IT'S A RESPONSIBILITY WE ALL CARRY TOGETHER, AND COMMUNITY EVENTS LIKE THIS SUMMIT REMIND US JUST HOW POWERFUL THAT COLLECTIVE EFFORT CAN BE.”

— EMMA GETSINGER



This work is powered by *people.*

STAFF

WHO SHOW UP IN THE HARDEST MOMENTS.

PARTNERS

WHO COLLABORATE ACROSS SYSTEMS.

DONORS

WHO INVEST IN LONG-TERM IMPACT.



Together, you make it possible for TYFS to be there, every day, every hour, whenever needed.

With new facilities opening and programs expanding, TYFS is entering a new chapter.

One defined by increased capacity, stronger systems, and a continued commitment to meeting youth and families where they are. The need is growing. *So is our ability* to respond.



THANK YOU TO OUR 2025 SPONSORS AND COMMUNITY PARTNERS!

Becoming Jackson Hole
Bill Van Gelder – Sotheby’s
Bank of Jackson Hole
Care Solace
Chuck & Jolie Nelson
Community Foundation of Jackson Hole
Coombs Outdoors
Creative Curiosity
Dave & Christine Murdoch
Faye Campbell, Marriage & Family Therapist
Fine Dining Restaurant Group
GAP!

Graze
Jackson Hole Community School
Jackson Hole Mountain Resort
Jackson Hole Travel & Tourism Board
JH Express Lube & Car Wash
Jo & Robin Keeler
Jonathon Updike, MD, MPH
Jorgensen Engineering
KHOL
Kilter Sport Performance & Physical Therapy

Larsen Family Dentistry
Lee’s Tees
Long Lane Partners
Long Reimer Winegar LLP
Lisa Carlin
Lucy Rankin
Mental Health & Recovery Services of Jackson Hole
Natrona Collective Health Trust
New West Building Company
Ortus Foundation
Singleton Peery Financial/Raymond James

Soroptimist of Jackson Hole
Spruce Mental Health
St. John’s Health
Teton County Health Department
Teton Literacy Center
Teton Motors
The Hub Bicycles JH
The Mental Wellness Collaborative
Triangle X Ranch
Two Ocean Builders
Willow Street Group
Wyoming Behavioral Institute

We are grateful to the 437 donors whose combined contributions of \$1.44 million covered 28% of TYFS’s operational needs in 2025.



P.O. Box 2631
Jackson, WY. 83001
www.tyfs.org



Save the Date

THE 29TH TYFS ANNUAL GOLF BENEFIT AT TETON PINES
July 22, 2026

Make a meaningful impact while enjoying a day on the golf course. By sponsoring our annual Golf Tournament, you directly support the life-changing work of Teton Youth & Family Services, and help youth and families build stronger, healthier futures. We invite you to be part of it.